

The Tolko logo is displayed in white, bold, sans-serif capital letters within a dark blue trapezoidal shape that tapers to the right.

Fact Card

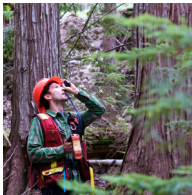
2016 Annual Figures

Manufacturing and Marketing Forest Products to World Markets

Founded in 1956, Tolko has grown from a small sawmill to become a company diversified by geography and product.

Customers and business partners recognize Tolko for our reliability, flexibility, and efficiency.

Fundamental to our success is a committed workforce that thrives on innovation, building partnerships, and achieving excellence.



TRUE. TRUSTED. TOLKO.

Tolko Facts (2016 Annual Figures)

Employees	2790
Manufacturing Divisions	15, located in British Columbia, Alberta, and Saskatchewan
Trees Planted	30.4 million
Export	To more than 30 countries worldwide

Production

Lumber	1.96 billion board feet 3.1 million cubic metres
Plywood	389 million square feet (3/8" basis) 344 thousand cubic metres
OSB	1.31 billion square feet (3/8" basis) 1.15 million cubic metres
Kraft Paper	127 thousand metric tonnes
Wood Chips	1.01 million BDU (bone dry units)
Electricity	272 thousand megawatt hours

Tolko Industries Ltd.

Corporate Office
Box 39, 3000 - 28th Street
Vernon, British Columbia, Canada V1T 6M1
Tel: 250 545 4411

www.tolko.com

Tolko is a member of the Forest Products Association of Canada and a signatory to the Canadian Boreal Forest Agreement.