



TOLKO LSL CONCRETE EDGE FORM

TRUE AND STRAIGHT FOR MULTIPLE POURS

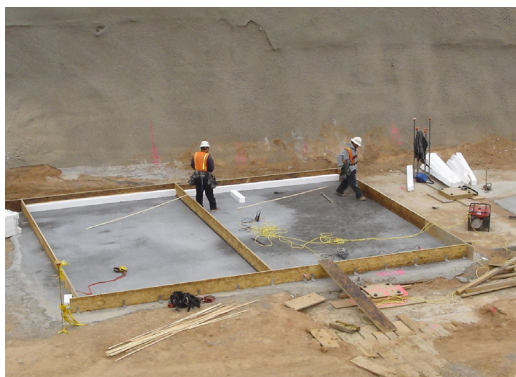


At Tolko, we've built our reputation on quality products, customer commitment and an unwavering integrity in all that we do. We strive to partner with our customers, building long-term relationships and helping fuel their ongoing success. We focus on making it easy for our customers to do business with us, providing product quality and consistency and delivering the goods on time, every time.

Tolko LSL CONCRETE EDGE FORM



Set up forms quickly and economically with Tolko LSL Concrete Edge Form. Unlike sawn lumber, Tolko's Concrete Edge Form products are consistently straight, pour after pour. MDI resin and Aspen wood fibre make forms lightweight and workable compared to alternative forming materials. Tolko is now pleased to offer two options for LSL Concrete Edge Form - our existing Standard product intended for typical residential jobs and the newly enhanced PRO product designed for heavy duty projects requiring the highest in quality and durability.

YOUR IDEAL FORMING CHOICE FOR: Tilt-up walls, slab on grade, foundations, sidewalks, and curbing.





CONCRETE EDGE FORM

		
	GOOD	BETTER
Product Application	Concrete Edge Form	Enhanced Concrete Edge Form
Thicknesses	1-1/4"	1-1/4"
Depths	3-1/2" to 24"	3-1/2" to 24"
Lengths	16'	16'
Edge Seal Color	Blue	Red

Ideal for Multiple Pours

Manufactured with highly durable, water resistant MDI resin and edge sealed for a water resistant bond designed to withstand repeated exposure to moisture.

Straight and True for Multiple Pours

Stop digging through piles of lumber. Each form board is straight, true, and resists warping-even after multiple pours.

Convenient Sizes for Easy Set-up

Cut-to-size concrete form boards in convenient depths of 3-1/2" to 24", and 16' lengths.

Screen Back Surface Finish

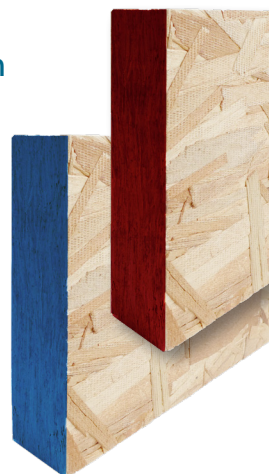
Suitable for various applications.

COMMITTED TO SUSTAINABLE FOREST MANAGEMENT.

We manufacture our products from renewable, recyclable and biodegradable resources, and our practices are guided by our Forest Management Principles and Environmental Policy. We also adhere to globally-accepted Sustainable Forest Management (SFM) and Chain of Custody (CoC) standards.



Our free [Tolko Product Guide](#) app is available for download. Set yourself up for success by finding the best Tolko lumber, plywood, OSB, and EWP products for each application.



TOLKO

Tolko Industries Ltd.
3000 - 28th Street
Vernon, BC V1T 9W9
Canada

TELEPHONE 250.549.5311
EMAIL EWPsales@tolko.com
WEBSITE tolko.com

**TRUE.
TRUSTED.
TOLKO.**

MADE
IN
CANADA
01.2020

The data and/or information is provided without any representations, warranties or conditions, whether express or implied, statutory or otherwise, including, without any limitation, any representations, warranties or conditions. For more information please visit tolko.com/resources or contact your Tolko Representative.