



Photo credit: Mitek Canada

## OFF-SITE CONSTRUCTION PROGRAM

Tolko manufactures a wide range of structural engineered wood products for the Off-Site Construction industry. With our North American wide reload network, we can supply mixed truck loads quickly and accurately. The below is a sampling of the products we have available:

- ✓ T-TEC OSB Premium Flooring
- ✓ T-TEC LSL Headers
- ✓ T-TEC LSL Top Plates
- ✓ T-TEC LSL Wall Framing
- ✓ T-TEC LSL Joists
- ✓ T-TEC LSL Stair Stringers
- ✓ T-TEC LSL Rim Board
- ✓ Tolko OSB Rim Board Plus
- ✓ T-STRAND Pro OSB Stair Tread
- ✓ T-STRAND OSB T&G Flooring
- ✓ T-STRAND OSB Sheathing
- ✓ T-PLY Pro T&G Plywood Underlayment
- ✓ T-PLY Plywood Sheathing
- ✓ ULAY Premium Plywood Underlayment
- ✓ Tolko Stud and Dimension Lumber
- ✓ Machine Stress Rated (MSR) Lumber
- ✓ T-DRY Custom Dried Lumber
- ✓ T-PLY Pro CCPTS

### CONTACT US

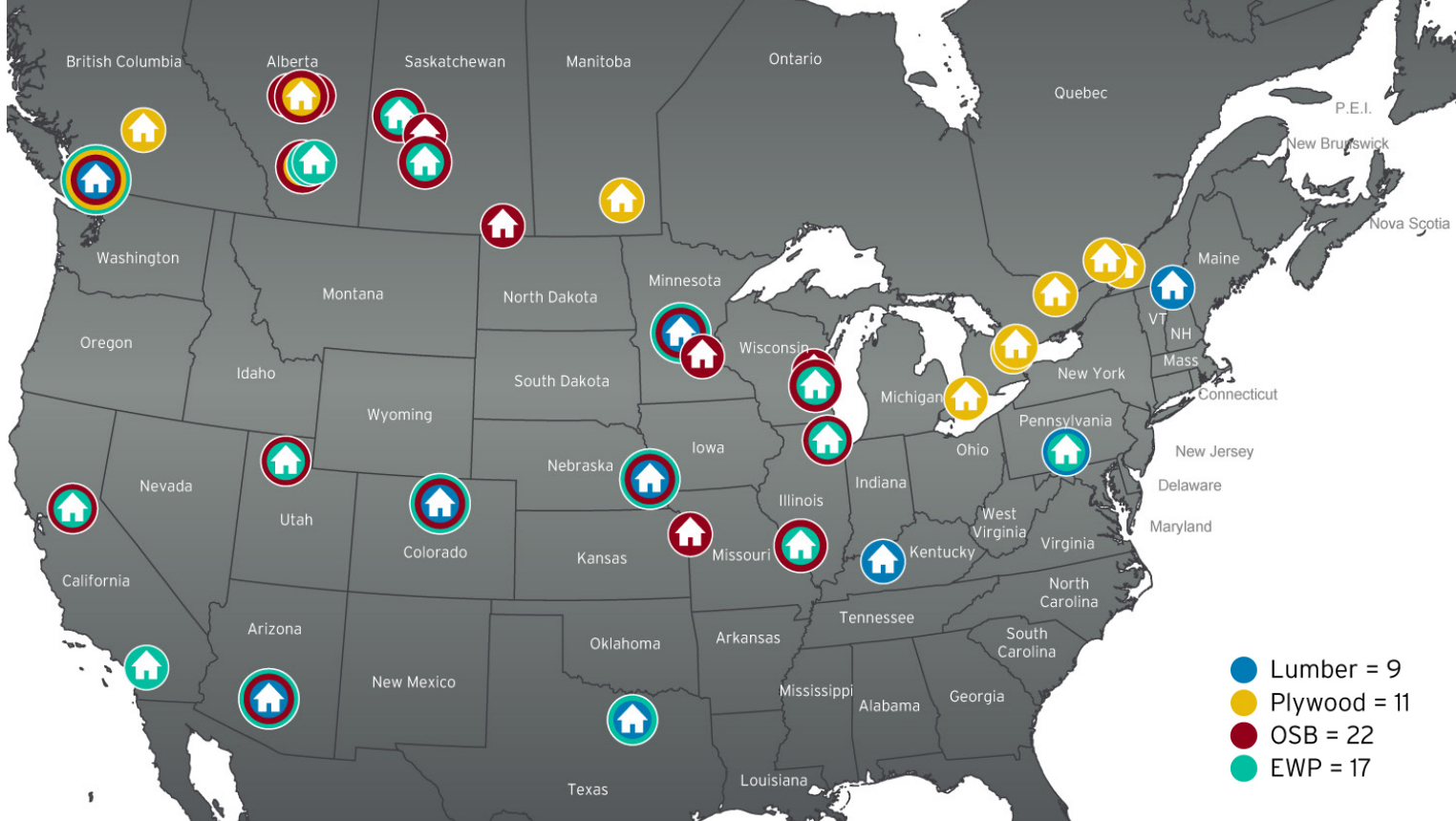
Let our EWP Sales Team design a program to support your business. Contact us today!

**PHONE** 250.549.5311

**EMAIL** [EWPsales@tolko.com](mailto:EWPsales@tolko.com)

Our free Tolko Product Guide app is available for download. Set yourself up for success by finding the best Tolko lumber, plywood, OSB, and EWP products for each application.





# OUR RELOADS PUT US CLOSER TO OUR CUSTOMERS

## BRINGING TOLKO PRODUCTS TO YOUR MARKET

We pride ourselves on being easy to do business with by searching for innovative solutions, identifying new opportunities, and investing in our customer relationships. Our reloads put us closer to our customers ensuring quick delivery and a consistent supply of Tolko products to the Off-Site Construction Industry.

Ask us about mixed truck opportunities offering multi-product shipments out of our reload locations throughout North America.

## SUSTAINABLE FOREST MANAGEMENT

We manufacture our products from renewable, recyclable and biodegradable resources, and our practices are guided by our Forest Management Principles and Environmental Policy. We also adhere to globally-accepted Sustainable Forest Management (SFM) and Chain of Custody (CoC) standards.



Photo credit: Mitek Canada

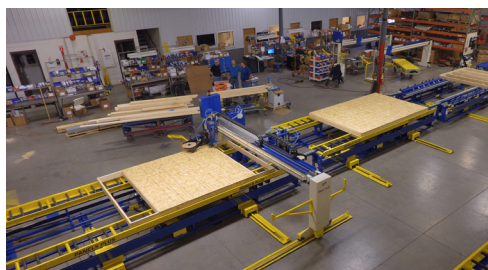


Photo credit: Mitek Canada

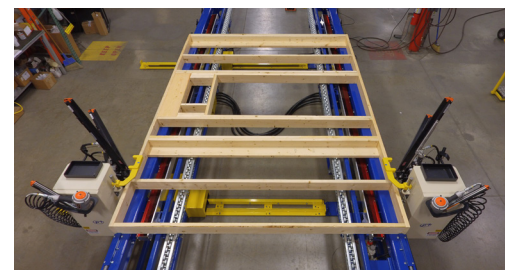


Photo credit: Mitek Canada

**TOLKO**

Tolko Industries Ltd.  
3000 - 28th Street  
Vernon, BC V1T 9W9  
Canada

TELEPHONE 250.549.5311  
EMAIL [ewpsales@tolko.com](mailto:ewpsales@tolko.com)  
WEBSITE [tolko.com](http://tolko.com)

MADE  
IN  
CANADA  
01.2021

The information contained herein is assumed to be correct at the time of printing, but is not guaranteed by the Company, distributor or publisher and should be verified with Tolko Industries Ltd.

**TRUE.  
TRUSTED.  
TOLKO.**