

TOLKO RESIDENTIAL AND COMMERCIAL FLOORING

TOLKO TTEC
OSB PREMIUM FLOORING

TOLKO TSTRAND
OSB PRODUCTS

TOLKO TPLY
PLYWOOD PRODUCTS

TOLKO ULAY
PREMIUM UNDERLAYMENT

**TRUE.
TRUSTED.
TOLKO.**

TOLKO



PRODUCT	LENGTH AND WIDTH		THICKNESS		SPECIES	GRADE STAMP		WARRANTY
	Canada	US	Canada	US		Canada	US	
● T-TEC OSB Premium Flooring	1220mm x 3660mm 1220mm x 3050mm 1220mm x 2440mm	4x12' 4x10' 4x8'		19/32" 23/32" 7/8" 1-1/8"	Aspen	APA PS2	APA PS2 STR 1 Scant & Full Face T&G	Lifetime 500-Day No-Sand Guarantee
● T-STRAND Pro OSB T&G Subfloor	1220mm x 3660mm 1220mm x 3050mm 1220mm x 2440mm	4x12' 4x10' 4x8'		19/32" 23/32" 7/8" 1-1/8"	Aspen	APA PS2	APA PS2 Scant & Full Face T&G	50 Years 365-Day No-Sand Guarantee
● T-STRAND OSB T&G Subfloor	1220mm x 3660mm 1220mm x 3050mm 1220mm x 2440mm	4x12' 4x10' 4x8'		19/32" 23/32" 7/8" 1-1/8"	Aspen	APA PS2	APA PS2 Scant & Full Face T&G	25 Years
● T-PLY Ultra Plywood T&G Subfloor	1220mm x 2440mm	4x8'	15.5 mm 18.5 mm 25.5 mm	19/32" 23/32" 31/32"	DFP/Fir	CSA O121 CSA O121 Custom	CC PTS (U/L) Scant Face T&G	50 Years 180-Day No-Sand Guarantee
● T-PLY Pro Plywood T&G Subfloor	1220mm x 2440mm	4x8'	15.5 mm 18.5 mm 25.5 mm	19/32" 23/32" 31/32"	CSP* DFP/Fir	CSA O151* CSA O121 Custom	CD PTS (U/L) Scant & Full Face T&G	25 Years
● T-PLY Plywood T&G Subfloor	1220mm x 2440mm	4x8'	15.5 mm 18.5 mm 25.5 mm	5/8" 3/4" 1"	CSP* DFP/Fir	CSA O151 CSA O121 Custom	CDX	25 Years
● ULAY Premium Underlayment <i>With fastener grid</i>	1220mm x 2440mm 1220mm x 1220mm	4x8' 4x4'	7.8 mm actual	5/16"	DFP/Fir		BC PTS** PS1 Underlayments	50 Years

● GOOD
 ● BETTER
 ● BEST

* Limited Availability
 ** Natural B



OSB T&G SUBFLOOR PRODUCTS | STURD-I-FLOOR®

T-TEC OSB Premium Flooring | Premium T&G Sturd-I-Floor®

Tolko T-TEC OSB Premium Flooring is preferred by builders for premium subfloor applications. Dual stamped with APA Sturd-I-Floor and Structural 1 certification¹ this strand-based composite wood panel boasts incomparable cross-panel stiffness and strength and is also suitable for roofing applications where required. You can be confident in our T-TEC OSB Premium Flooring with a lifetime limited warranty and no-sand guarantee we always stand behind.



Features

T-TEC OSB Premium Flooring is engineered to outperform the industry's most advanced flooring panels in nail retention, moisture resistance and durability.

T-STRAND™ Pro OSB T&G Subfloor | Enhanced T&G Sturd-I-Floor®

Our enhanced subfloor was developed specifically to meet the challenges of wet building climates. Moisture-resistant and edge-sealed, Tolko T-STRAND T&G OSB Subfloor resists warping and stays true longer. Rain or shine, Tolko T-STRAND works as hard as you do. This product comes with a no-nonsense, transferable, 365-day no-sand, 50-year limited warranty. View warranty for full details.



Features

Ideal for construction seasons or projects at risk of weather exposure, Tolko T-STRAND Pro OSB T&G Subfloor offers greater dimensional stability and superior moisture resistance.

T-STRAND™ OSB T&G Subfloor | T&G Sturd-I-Floor®

Tested to a PS2 grading standard and certified by The Engineered Wood Association (APA), Tolko T-STRAND OSB Subfloor features greater strength and resistance to shearing. Moisture-resistant and edge-sealed, Tolko T-STRAND T&G OSB subfloor resists warping and stays true longer. This product comes with a no-nonsense, transferable, 25-year warranty against delamination. View warranty for full details.



Features

T-STRAND OSB T&G Subfloor panels have improved durability and increased stiffness for less deflection when walked on.





PLYWOOD T&G SUBFLOOR PRODUCTS | STURD-I-FLOOR®

T-PLY™ Ultra T&G Subfloor | CCPTS T&G Sturd-I-Floor®

Engineered to meet the exacting standards of the most particular customers, Tolko T-PLY Ultra T&G plywood subfloor is the best quality-certified plywood we have ever created. Bar none. It is especially suited as a subfloor for exterior vinyl covered decks and is endorsed by Duradek as the subfloor of choice. This product is backed by a transferable, 50-year limited warranty against delamination and punctures, plus a 180-day no-sand guarantee.



Features

T-PLY Ultra T&G Subfloor features a precision-sanded, premium Douglas Fir veneer face and an ink-jetted fastener guide. It has a stronger panel construction and is protected by tear-resistant woven poly bags and bumper strips.

T-PLY™ Pro Select T&G Subfloor | CD Underlayment T&G Sturd-I-Floor®

Tolko T-PLY Pro Select T&G subfloor was engineered for builders who want a smoother structural-grade panel with a better grade face veneer appearance. Tough, tested and professional, Tolko T-PLY Pro T&G subfloor has all of the benefits of standard Tolko T-PLY subfloor in a smoother panel. This product comes with a no-nonsense, transferable, 25-year limited warranty against delamination. View warranty for full details.



Features

T-PLY Pro T&G Subfloor is versatile and durable. This swell-resistant panel features a touch-sanded surface and industry-standard tongue and groove. T-PLY Pro T&G Subfloor is protected during transport by tear-resistant woven poly bags and bumper strips.

T-PLY™ T&G Subfloor | CDX T&G Sturd-I-Floor®

Our most economical plywood subfloor panels also are among the industry's top performing in standard flooring. Crafted from Canadian plywood, these T&G panels are known for exceptional value. This product is backed by a no-nonsense, transferable, 25-year limited warranty against delamination. View warranty for full details.



Features

T-PLY T&G Subfloor is a lightweight panel for easy installation. It features industry-standard tongue and groove and is protected during transport by tear-resistant woven-poly bags and bumper strips.

THIN UNDERLAYMENT

ULAY™ Premium Underlayment | Premium 5/16 PS1 Underlayment

The best underlayment product on the market today, Tolko ULAY Premium Plywood Underlayment delivers the ultimate in performance and is perfect under ceramic tile or vinyl flooring in new construction and renovations. This product is backed by a transferable, 50-year limited warranty against delamination, punctures, bleed-through, and discoloration of flooring. View warranty for full details.



Features

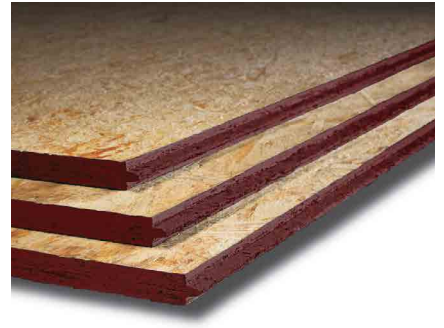
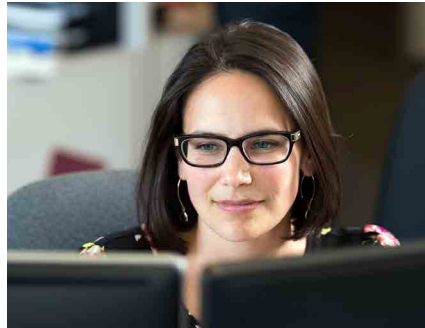
ULAY is engineered for superior performance with a convenient ink-jetted fastener guide for precise installation. Known for its precision-sanded finish and uniform surface, this panel is constructed with waterproof, exterior grade glue for greater panel stability and reduced tile cracking and popping. Openings are filled with latex-based putty. This product is available in 4'x8' or 4'x4' sheets and packaged in convenient 50 piece packs.

TOLKO

Tolko is a family-owned company based in British Columbia, with 60 years of experience manufacturing a wide range of forest products. We have become a trusted manufacturer and valuable business partner for customers around the world. Our mills are focused on providing consistent quality and our sales team is dedicated to creating lasting relationships with our customers.

CUSTOMER COMMITMENT

At Tolko, our commitment to quality is evident in more than our plywood products. It's clear in our dedication to helping your business thrive. From connecting globally with our customers to providing innovative solutions, we deliver consistent quality and superior service with unmatched integrity you can count on.



BUILD GREEN WITH TOLKO

We manufacture our products from renewable, recyclable and biodegradable resources, and our practices are guided by our Forest Management Principles and Environmental Policy. We also adhere to globally accepted Sustainable Forest Management (SFM) and Chain of Custody (CoC) standards.



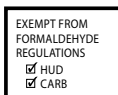
Tolko products earn the certified wood credit under **LEED** and **Green Globes** through our Sustainable Forest Management (SFM) certification and Sustainable Forestry Initiative® (SFI), which fully qualifies under the LEED standard via the LEED Alternative Compliance Path process. In addition, our panel products qualify for incremental LEED credits under the low-emitting materials requirements.



SETTING THE STANDARD

Each of our T-TEC, T-STRAND and T-PLY flooring products:

- ✓ Are backed by industry-standard limited warranties
- ✓ Are manufactured to exacting specifications from renewable, recyclable and biodegradable forest resources
- ✓ Are certified by APA - The Engineered Wood Association
- ✓ Contain no added urea-formaldehyde resin (NAUF)



 **WARNING**

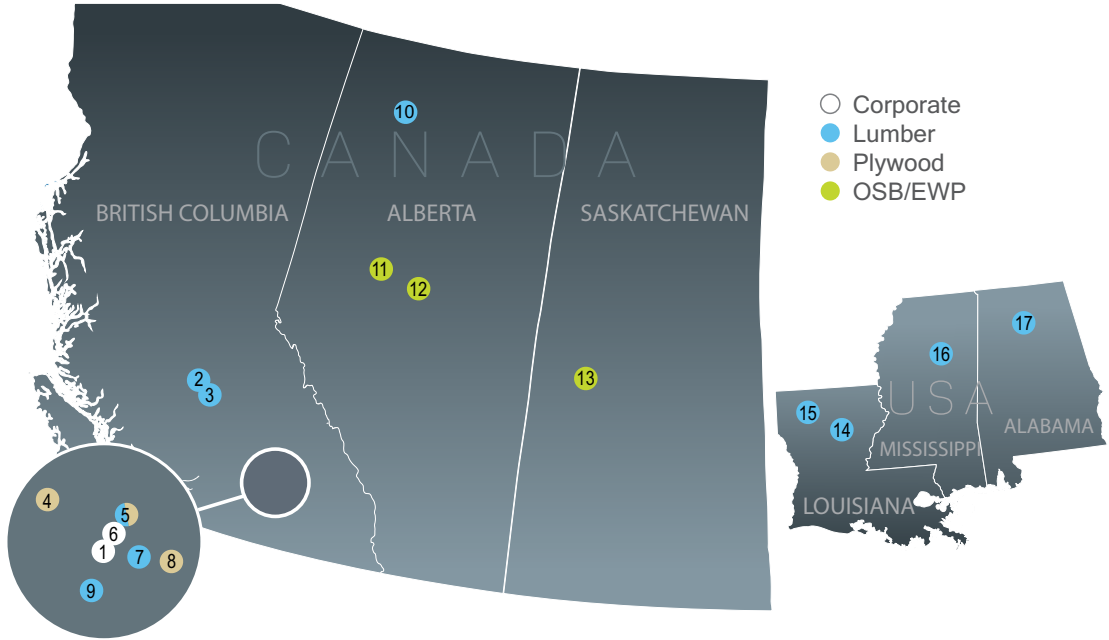
Drilling, sawing, sanding or machining wood products can expose you to wood dust, a substance known to the State of California to cause cancer. Avoid inhaling wood dust or use a dust mask or other safeguards for personal protection. For more information go to www.P65Warnings.ca.gov/wood.

 **WARNING**

This product can expose you to chemicals including methanol, which is known to the State of California to cause birth defects or other reproductive harm. For more information go to www.P65Warnings.ca.gov.

TOLKO OPERATIONS

Tolko's state-of-the-art lumber, plywood, OSB, and EWP operations are located in the abundant forests of Western Canada and extend into the Southern Yellow Pine forests of the United States of America.



- Corporate
- Lumber
- Plywood
- OSB/EWP

British Columbia, CA

- | | |
|------------------|-------------------------|
| 1. Vernon | CORPORATE |
| 2. Soda Creek | LUMBER |
| 3. Lakeview | LUMBER |
| 4. Heffley Creek | PLYWOOD/VENEER |
| 5. Armstrong | LUMBER & PLYWOOD/VENEER |
| 6. Eagle Rock | REFORESTATION CENTRE |
| 7. Lavington | LUMBER |
| 8. White Valley | VENEER |
| 9. Lake Country | REMANUFACTURING |

Alberta, CA

- | | |
|------------------|---------|
| 10. High Level | LUMBER |
| 11. High Prairie | OSB/EWP |
| 12. Athabasca | OSB/EWP |

Saskatchewan, CA

- | | |
|-----------------|---------|
| 13. Meadow Lake | OSB/EWP |
|-----------------|---------|

Louisiana, USA

- | | |
|--|--------|
| 14. LaSalle Lumber Company LLC
A Hunt-Tolko Partnership | LUMBER |
| 15. Bienville Lumber LLC
A Hunt-Tolko Partnership | LUMBER |

Mississippi, USA

- | | |
|--|--------|
| 16. Southeastern Timber Products LLC
An STP-Tolko Partnership | LUMBER |
|--|--------|

Alabama, USA

- | | |
|--|--------|
| 17. Jasper Forest Products LLC
A Jasper-Tolko Partnership | LUMBER |
|--|--------|



Our free [Tolko Product Guide](#) app is available for download. Set yourself up for success by finding the best Tolko lumber, plywood, OSB, and EWP products for each application.

02.2022

Vernon Office

3000 - 28th Street
Vernon, British Columbia
Canada V1T 6M1

OSBSales@tolko.com
PlywoodSales@tolko.com

WWW.TOLKO.COM

The data and/or information is provided without any representations, warranties or conditions, whether express or implied, statutory or otherwise, including, without any limitation, any representations, warranties or conditions. For more information please visit tolko.com/resources or contact your Tolko Representative.

