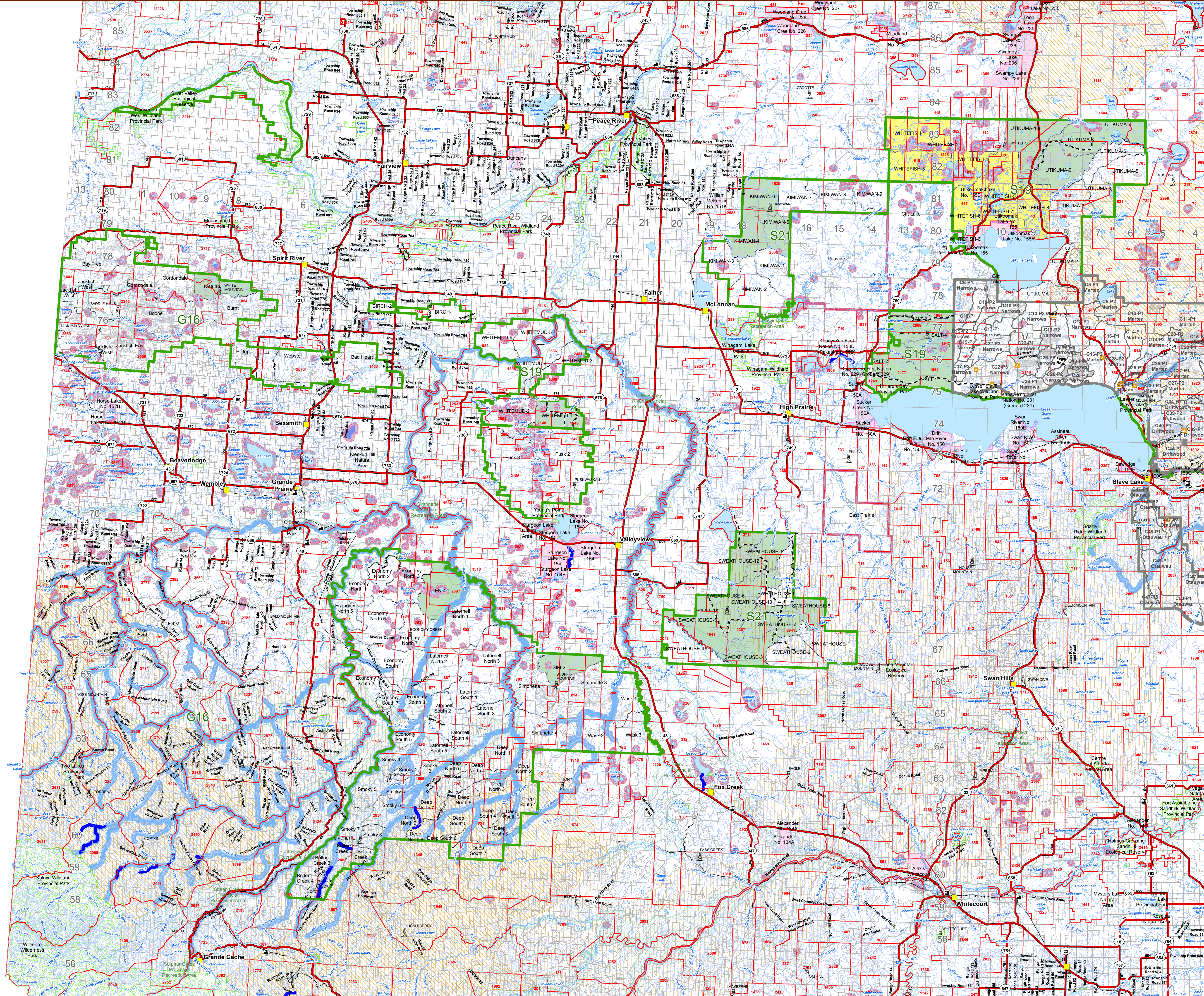
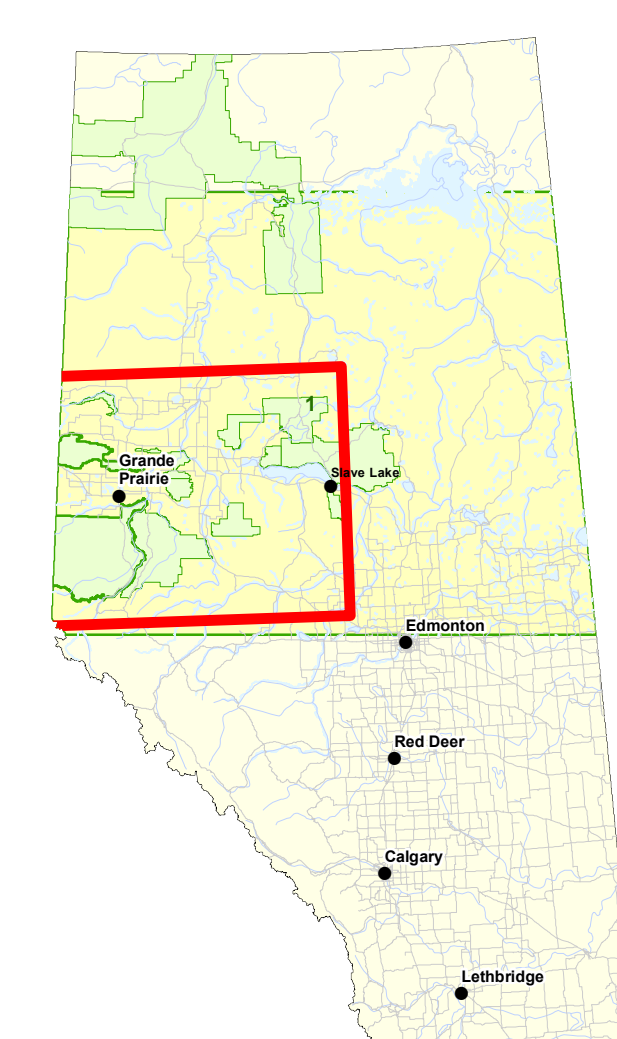


# General Development Plan High Prairie Tenures

Operating Period:  
2020 - 2025



### Forestry Data

- Storage Yard
- Tolko Millsite
- Forestry Millsite
- Lookout Tower
- Camp Location \*\*
- Capital Roads
- 2019\_GDP\_Other\_Compartment
- Tolko\_G16
- FMA Tolko Industries Ltd., Vanderwell Contractors (1971) Ltd. and West Fraser Mills Ltd. (Slave Lake)
- Tolko Access Road (DLO)
- Arctic\_Graying\_Watercourse
- Traps (Registered Fur Management Areas)
- GDP - Class A Waterbody
- Protected Area (Alberta TPR)
- Key Wildlife & Biodiversity Zone
- Caribou Zone
- Grizzly Bear Zone
- Trumpeter Swan Waterbody
- Trumpeter Swan Buffer
- Cut Blocks
- Tolko High Prairie Planned Compartments
- Alkameg Timber Ltd. Planned Compartments

### Base Data

- Highway
- Express Road
- Railway
- Township
- Indian Reserve
- Protected Area (Alberta TPR)
- Major Watercourse
- Major Waterbody
- FMU\_NAME
- G15; S17; S19; S21
- Metis Settlement

User: EtlensS  
Map Version: 1.0  
Map Template Version: 5.0  
Date: 1/7/2019  
Coordinate System: NAD 1983 UTM Zone 11  
Path: V:\A\h\basca\Woodlands\Planning\_PL\PL04.5\_General\_Development\_Plan\TolkoHP2019\Map\GDP\_H...  
Dimensions: 36 x 24 inches

1:516,415