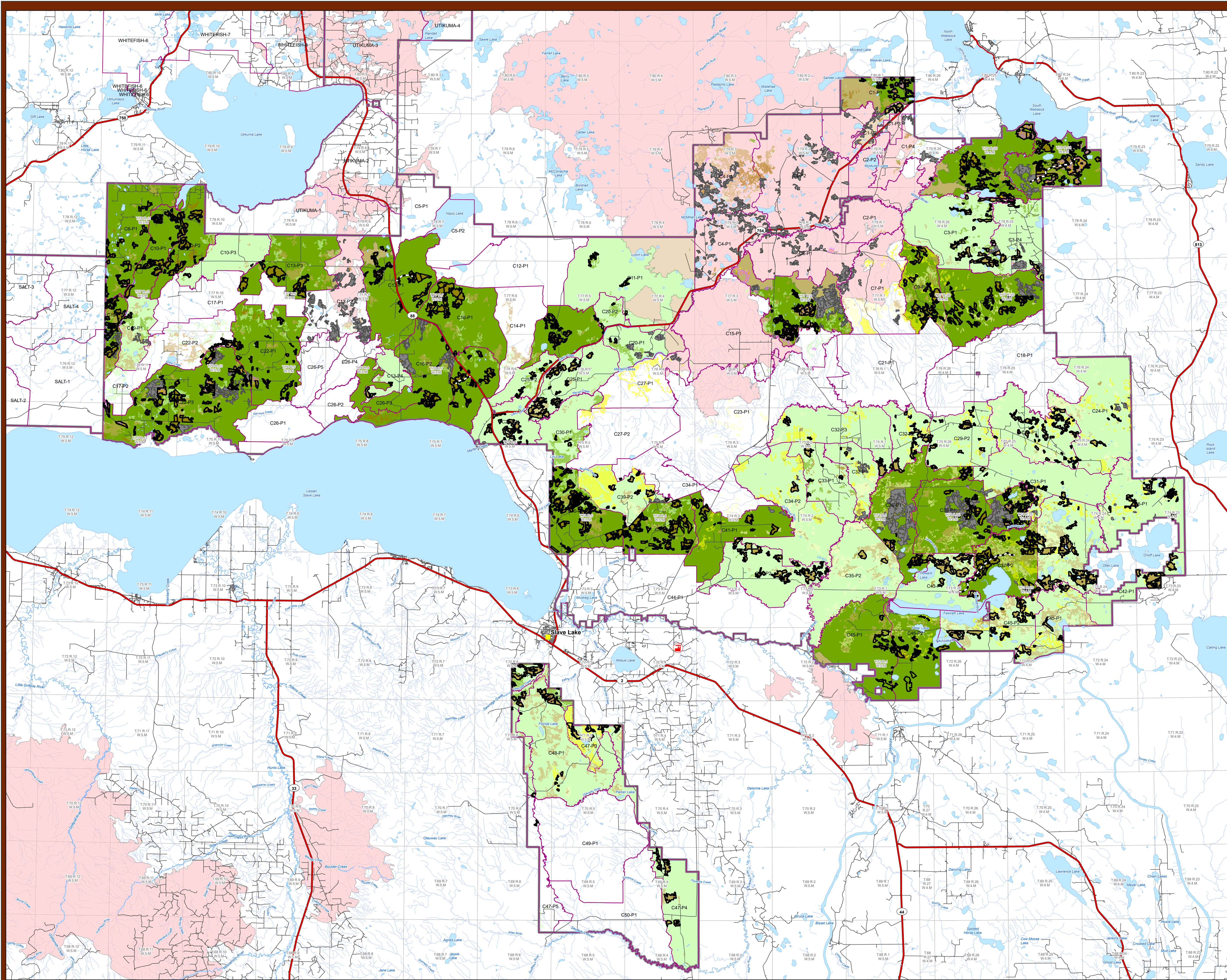
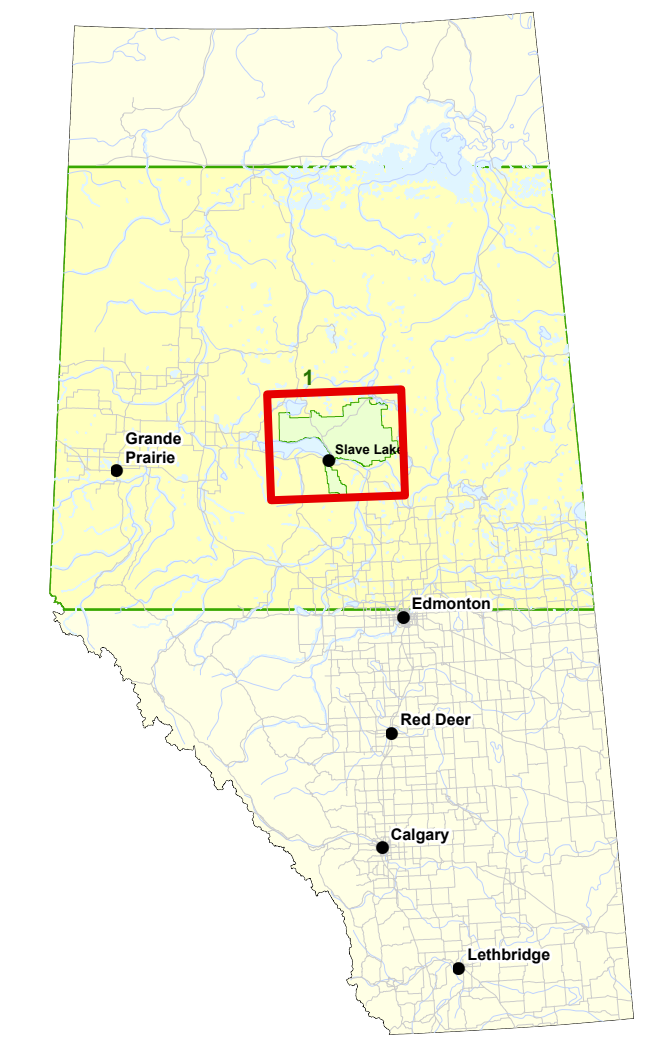


# General Development Plan

## Slave Lake Tenures

Operating Period:  
2026-2031



**Consultation**

- Capital Roads
- Planned Harvest Areas
  - Primary
  - Contingency
- S17 SHS
  - TOLK, Decade1
  - TOLK, Decade2
  - TOLK, Plan3
  - VAND, Decade1
  - VAND, Decade2
  - WFML, Decade1
  - WFML, Decade2

**Forestry Data**

- Planned Blocks
- Cut Blocks
- Compartment Boundary
- FMA Boundaries
- Major Waterbody
- Fire Boundaries
- Large Populated Area
- Small Populated Area
- Highway
- Existing Road
- Township
- Tolko Millsite

\* Should plans deviate from what is represented, consider site-specific concerns in all areas when addressing this map. In assessing site-specific concerns, please consider that all existing cutblocks have the potential for operations campsite locations.

\*\* It is important to understand that these plans are subject to operational change. Unforeseen circumstances – like insect and tree dieback outbreaks, wildfires, severe blowdown, unfinished timber harvest operations from previous years or other operational constraints – may necessitate that we move our operations plans to other areas identified within the GDP.